



IPC Integrated Professional Cleaning

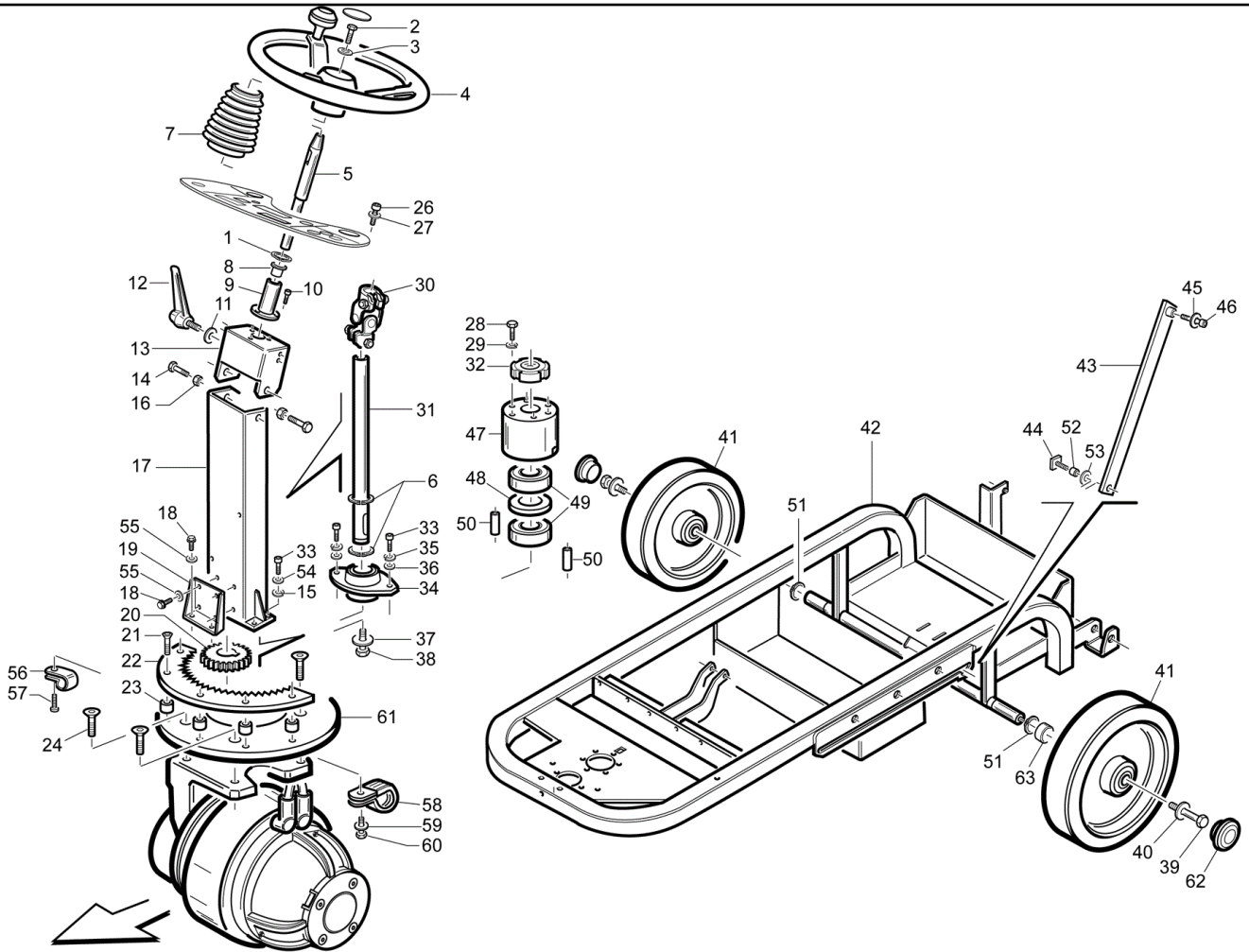
IPC Gansow

Spare Parts List

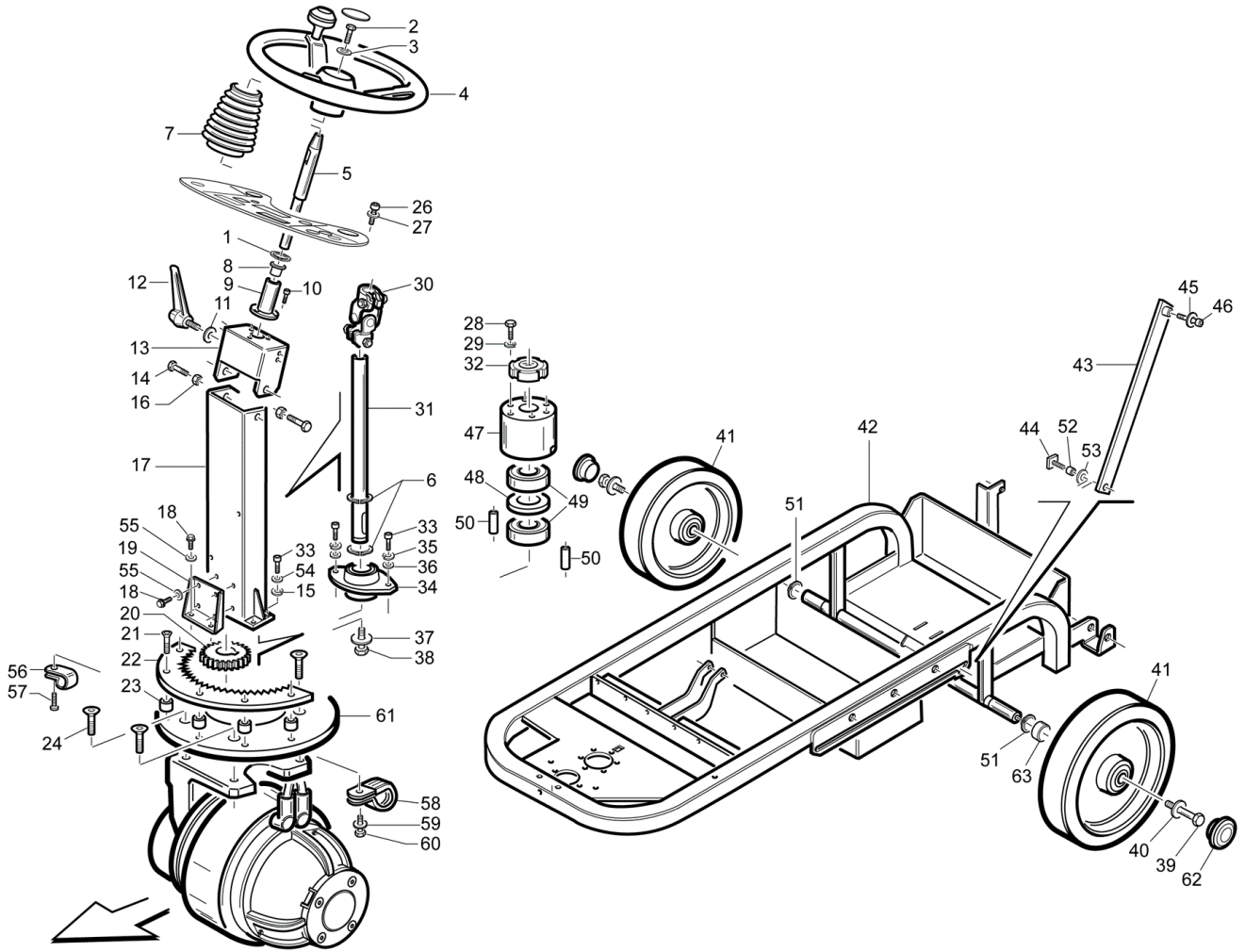
STADSING DANMARK A/S

Ref: LPTB02434

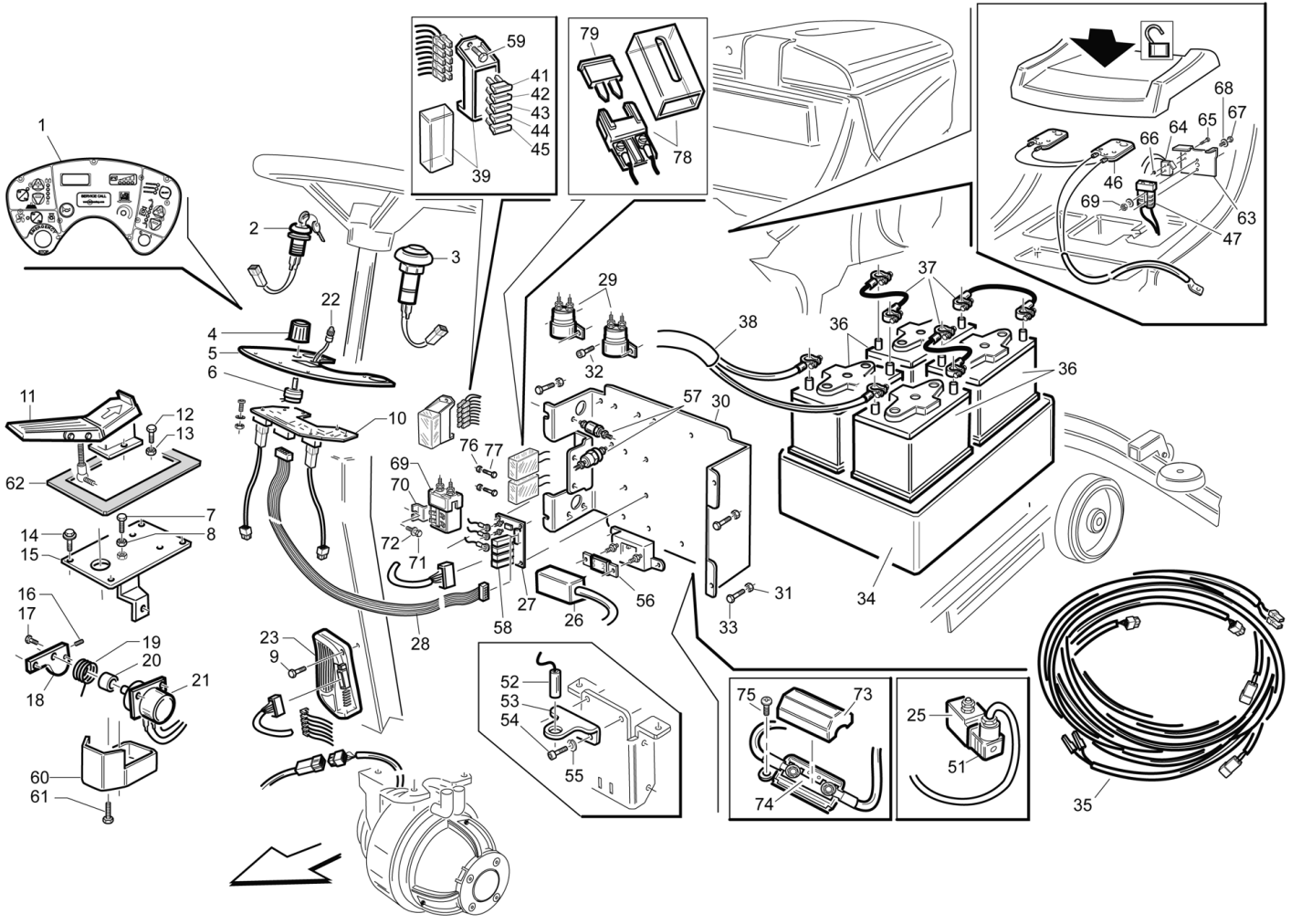
Model: CT110 BT70+CB GR/VE STADSING



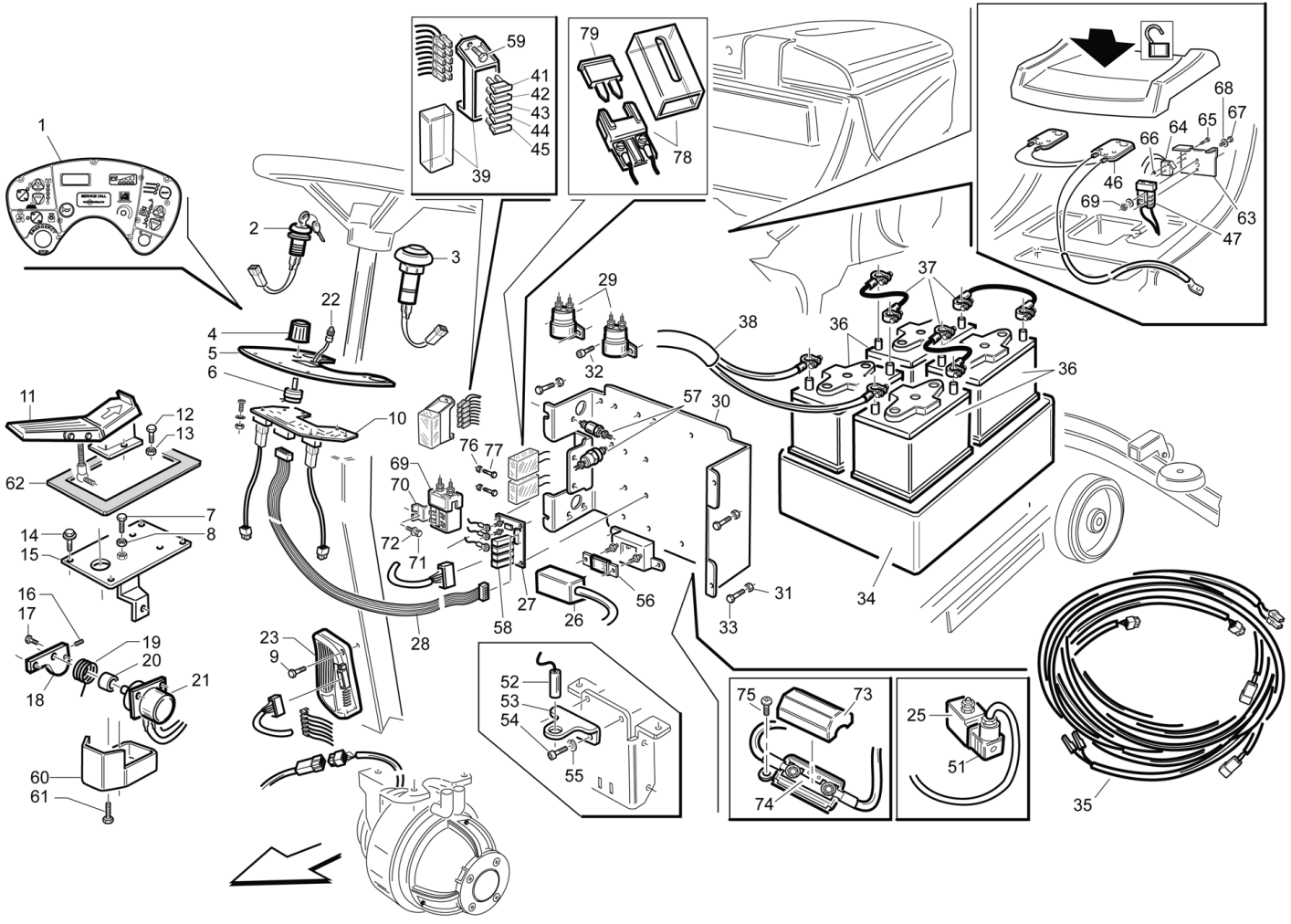
Ref.	K	Part N.	Customer Part N.	Description	Qty	Validity:		Price
						From	To	
0001				CIRCLIP D. 15 UNI 7435	2,00			--
0002				SCREW TE M 10X30 ZINC. UNI 5739	1,00			--
0003				WASHER D.10 X40X2.5 UNI6593	1,00			--
0004		817257		STEERING WHEEL D. 320 L.14	1,00			--
0005		817504		SHAFT PER VOLANTE TK 1050 ZINC.	1,00			--
0006				SEGER 20	2,00			--
0007				PROTECTOR -	1,00			--
0008				BUSHING TK 1000	2,00			--
0009				BUSHING PORTA PIANTONE TK1050 ZIN	1,00			--
0010				SCREW TE F/ROND. M 6X 16 ZB	3,00			--
0011		814014		WASHER D. 8 X24 INX UNI 6593	1,00			--
0012				HANDLE M8X25	1,00			--
0013				KIT REGOLAZIONE STERZO CT110	1,00			--
0014				SCREW TE M 10X 20	2,00			--
0015		816795		WASHER D. 8 INX UNI 6592	4,00			--
0016				NUT M10 TEF	2,00			--
0017				UP STEERING CT110	1,00			--
0018		816930		SCREW TE 6X20 UNI5739 INX	6,00	03/2010		--
0018		816797		SCREW TE 6X16 UNI5739	6,00		03/2010	--
0019				BRACKET PIANTONE	1,00			--
0020		810928		PINION STERZO	1,00			--
0021				SCREW TSCE UNI 5933 6X25 ZB	5,00			--
0022		818186		BRAKE CT110	1,00			--
0023				SPACER CORONA	5,00			--
0024				SCREW TSPEI M10x30	4,00			--
0026				SCREW M 4X 10 TCB-TC INX	5,00			--
0027				WASHER D. 4 INX	5,00			--
0028				SCREW TE M8x35 UNI5739 INOX	5,00			--
0029				WASHER D. 8 INX GRW UNI 1751	5,00			--
0030				ARTICULATION CARDANICO	1,00			--
0031				SHAFT STERZO	1,00			--
0032		819242		RING NUT AUTOBLOK M 35 X 1,5 GUK	1,00			--
0033				SCREW TE 8X20 UNI5739 INX	4,00			--
0034		816856		SUPPORT	1,00			--
0035				WASHER D. 8 INX GRW UNI 1751	2,00			--
0036		816795		WASHER D. 8 INX UNI 6592	2,00			--
0037				WASHER 6x24 INOX UNI 6593	1,00			--
0038		816797		SCREW TE 6X16 UNI5739	1,00			--
0039				SCREW TE 10X25 UNI5740	2,00	05/2011		--



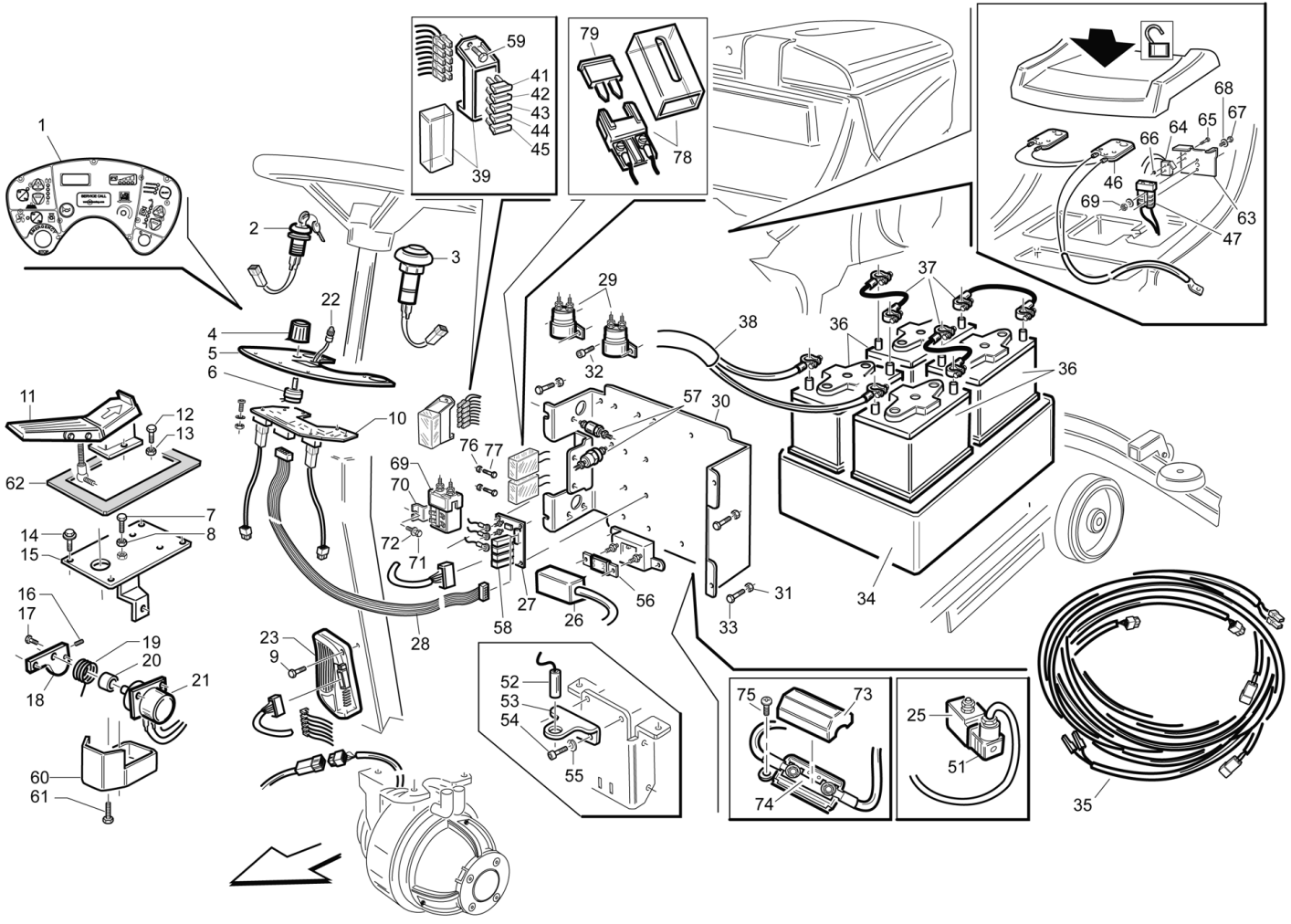
Ref.	K	Part N.	Customer Part N.	Description	Qty	Validity:		Price
						From	To	
0039				SCREW TE M 10X 20	2,00		05/2011	--
0040				WASHER RUOTE POSTERIORI	2,00			--
0041		811882		WHEEL D.300 H=70	2,00		05/2011	--
0041		811882		WHEEL REAR PU D.300 CT110	2,00	05/2011		--
0042				FRAME CT110	1,00			--
0043				LEVER CT110	1,00			--
0044				SCREW ASTA SERBATOIO P185	1,00		11/2010	--
0044		816465		SCREW TE M 8X 16 UNI 5739 A2	1,00	11/2010		--
0045				WASHER D. 5 0.466 UNI 6592	1,00			--
0046		814063		SCREW TE FR 5X12 ZB	1,00			--
0047				PLATE CT110	1,00			--
0048				SPACER Ø48 X Ø36,5 X 20	1,00			--
0049		816853		BEARING 6007-2RS1	2,00			--
0050				BUSHING STERZO	2,00			--
0051				SEEGER E25x1,2 DIN471	2,00			--
0052				BUSHING ASTA SERBATOIO P185	1,00			--
0053				WASHER D.12 UNI 6592	1,00		11/2010	--
0053		814014		WASHER D. 8 X24 INX UNI 6593	1,00	11/2010		--
0054		816795		WASHER D. 8 INX UNI 6592	4,00			--
0055		818476		WASHER D.6 UNI 6592 INOX	6,00			--
0056				DUCT LOCK D.9,5	2,00			--
0057				SCREW M 4X 10 TCB-TC INX	2,00			--
0058				CLAMP d.16	1,00			--
0059		814033		WASHER D. 6 INX GRW UNI 1751	1,00			--
0060		817466		SCREW TE 6X 12 A2 UNI 5739	1,00			--
0061				PLATE STERZO	1,00			--
0062				CAP G48 FOR WHEEL	2,00	05/2011		--
0063				ARM PORTARUOTA TERGI P185	2,00	05/2011		--



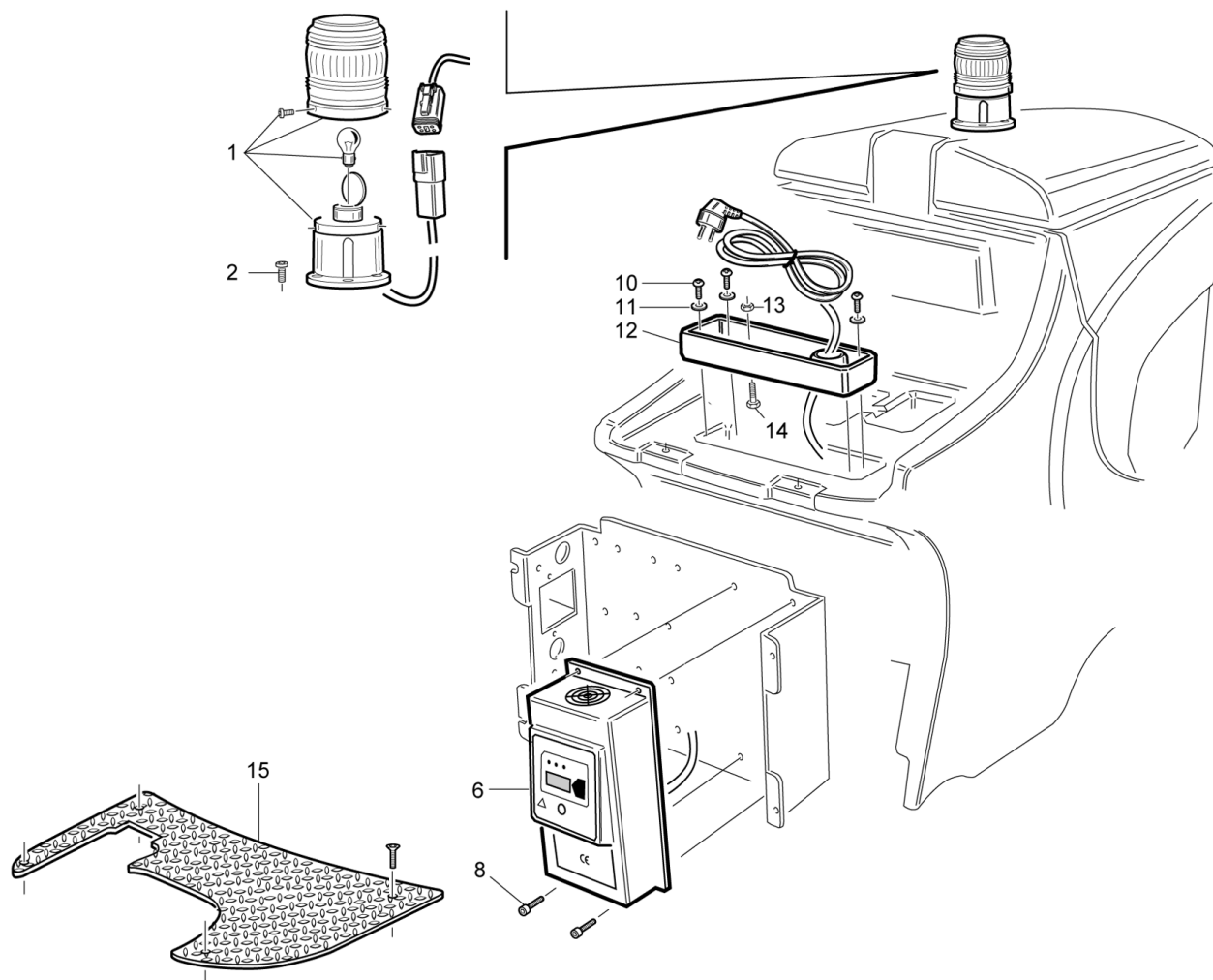
Ref.	K	Part N.	Customer Part N.	Description	Qty	Validity: From	To	Price
0001				LABEL -	1,00			--
0002		817357		SWITCH TK	1,00			--
0003		818395		BUTTON DI EMERGENZA TK1400 24V	1,00			--
0004				KIT 1050-1202	1,00			--
0005				PLATE -	1,00			--
0006		817256		POTENTIOMETER 100K	1,00			--
0007				SCREW TE M 8X 30 INX UNI 5739	1,00			--
0008				NUT M 8 INX	1,00			--
0009				SCREW TE M. 4-20	2,00			--
0010		818181		BOARD CONTROL PANEL CT110	1,00			--
0011		817455		PEDALE CT110	1,00			--
0012		816797		SCREW TE 6X16 UNI5739	2,00			--
0013		816441		NUT M 6 INX	2,00			--
0014		814063		SCREW TE FR 5X12 ZB	4,00			--
0015				SUPPORT ACCELERATORE	1,00			--
0016				GRUB SCREW M4X8	1,00			--
0017				SCREW TE M. 4-20	2,00			--
0018				CONNECTING ROD POTENZIOMETRO	1,00			--
0019		817343		SPRING ACCELLERATORE	1,00		04/2010	--
0019		817343		SPRING -	1,00	04/2010		--
0020				BUSHING -	1,00		04/2010	--
0020		817388		BUSHING	1,00	04/2010		--
0021		817006		POTENTIOMETER 0-5K	1,00			--
0022				FUSE-HOLDER -	1,00			--
0023		817132		BOARD TRACTION CURTIS CT110	1,00			--
0025		810262		SOLENOID VALVE	1,00		10/2011	--
0025		810274		SOLENOID VALVE	1,00	10/2011		--
0026				FUSE-HOLDER MEGA	1,00			--
0027		817133		BOARD ACTUATORS CONTROL CT110	1,00			--
0028		818266		CABLE FLAT	1,00		10/2008	--
0028		818266		CABLE FLAT	1,00	10/2008		--
0029		817158		CONTACTOR 24V T106 P	2,00	05/2009		--
0029		817158		CONTACTOR 24V T106 P	3,00		05/2009	--
0030				PLATE ELETTRONICA	1,00			--
0032		814063		SCREW TE FR 5X12 ZB	8,00			--
0033		814063		SCREW TE FR 5X12 ZB	4,00			--
0034		818365		CONTAINER BATTERIA	1,00			--
0035				WIRING CT110	1,00			--
0036		809999		BATTERY 6 V 180 AH (C5)	4,00			--



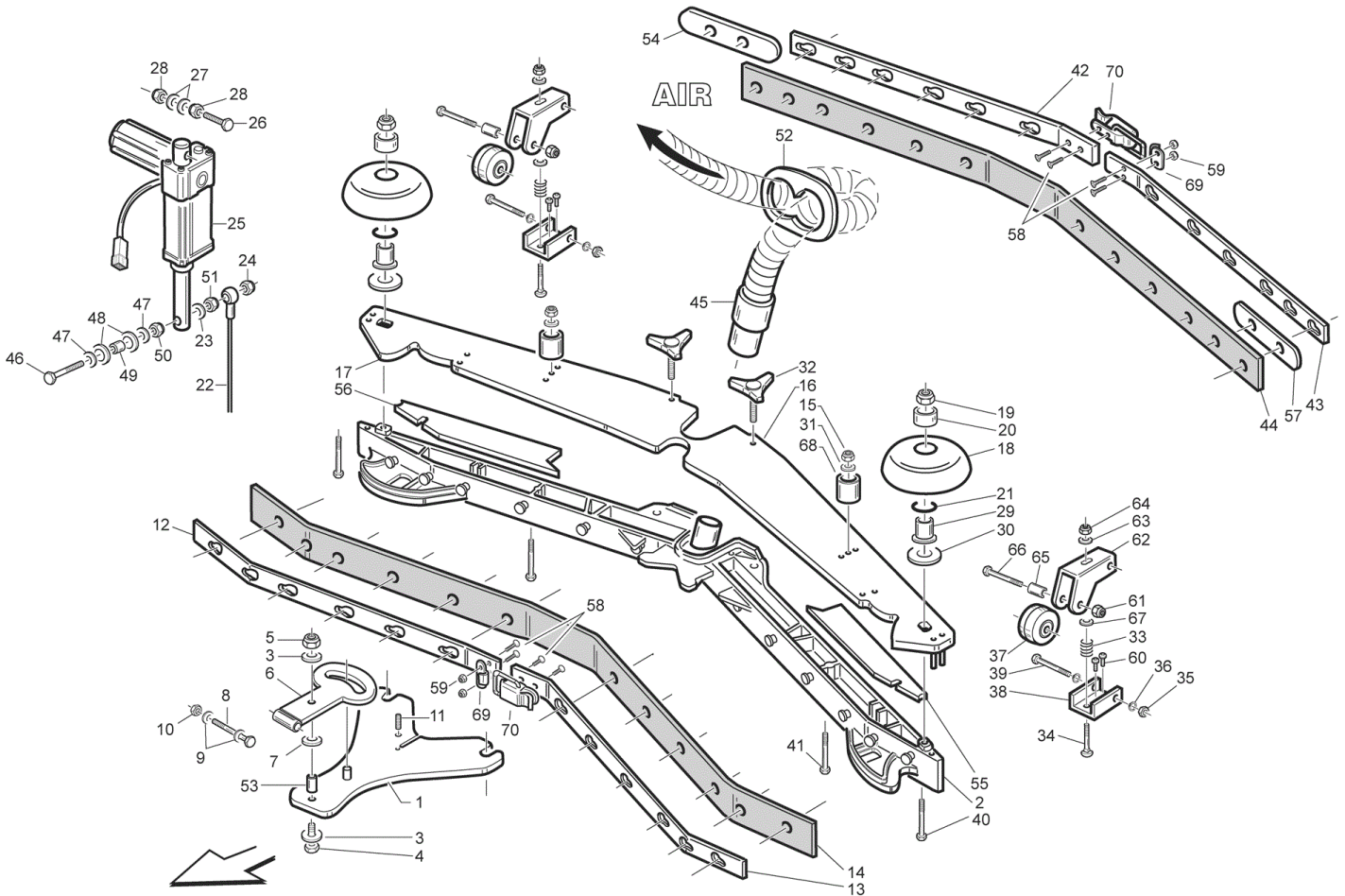
Ref.	K	Part N.	Customer Part N.	Description	Qty	Validity:		Price
						From	To	
0036		809999		BATTERY ACID 6V 180Ah TUBULAR	4,00			--
0037		816659		WIRING B 450 BT	3,00			--
0038				WIRING CT110	1,00			--
0039		817159		FUSE-HOLDER 6 VIE	1,00			--
0040				FUSE 30A	1,00		10/2011	--
0041				FUSE 30A	1,00		10/2011	--
0041				FUSE A LAMA 2 A. UNIVAL	1,00	10/2011		--
0042				FUSE 25A	1,00			--
0043				FUSE 3A	1,00			--
0044				FUSE 3A	1,00			--
0045				FUSE 3A	1,00			--
0046		818318		DASHBOARD SEDILE	1,00			--
0047		810256		PLUG M CB50 A 600V RD.	1,00			--
0051				WIRING CT110	1,00			--
0052		817344		SENSOR -	1,00			--
0053				SUPPORT -	1,00			--
0054		816797		SCREW TE 6X16 UNI5739	2,00			--
0055		814033		WASHER D. 6 INX GRW UNI 1751	2,00			--
0056				FUSE 100A	1,00			--
0057				INSULATOR M6 35-CH32	1,00			--
0058		817134		RELAY CT110	4,00			--
0059		814063		SCREW TE FR 5X12 ZB	2,00			--
0060				COVER -	1,00			--
0061		814063		SCREW TE FR 5X12 ZB	2,00			--
0062				GASKET CT110	1,00			--
0063				PLATE ANDERSON	1,00			--
0064				MICROSWITCH V4	1,00			--
0065				SCREW TC- M.2-16 OTTONE	2,00			--
0066				NUT M2	2,00			--
0067				SCREW M3-20 INOX	2,00			--
0068		816467		WASHER D. 3 INX	2,00			--
0069		817292		CONTACTOR 24V-100A	1,00	05/2009		--
0070				BRACKET -	1,00	05/2009		--
0071				CARRYNG BAG	2,00	05/2009		--
0072				WASHER D. 4 0.232 UNI 6592	2,00	05/2009		--
0073		816653		FUSE-HOLDER	1,00			--
0074				FUSE 40A NST.	1,00			--
0075				SCREW AUTOF.TC UNI6954 3,9X22	1,00			--
0076		816987		NUT M 5 INX	2,00	10/2011		--



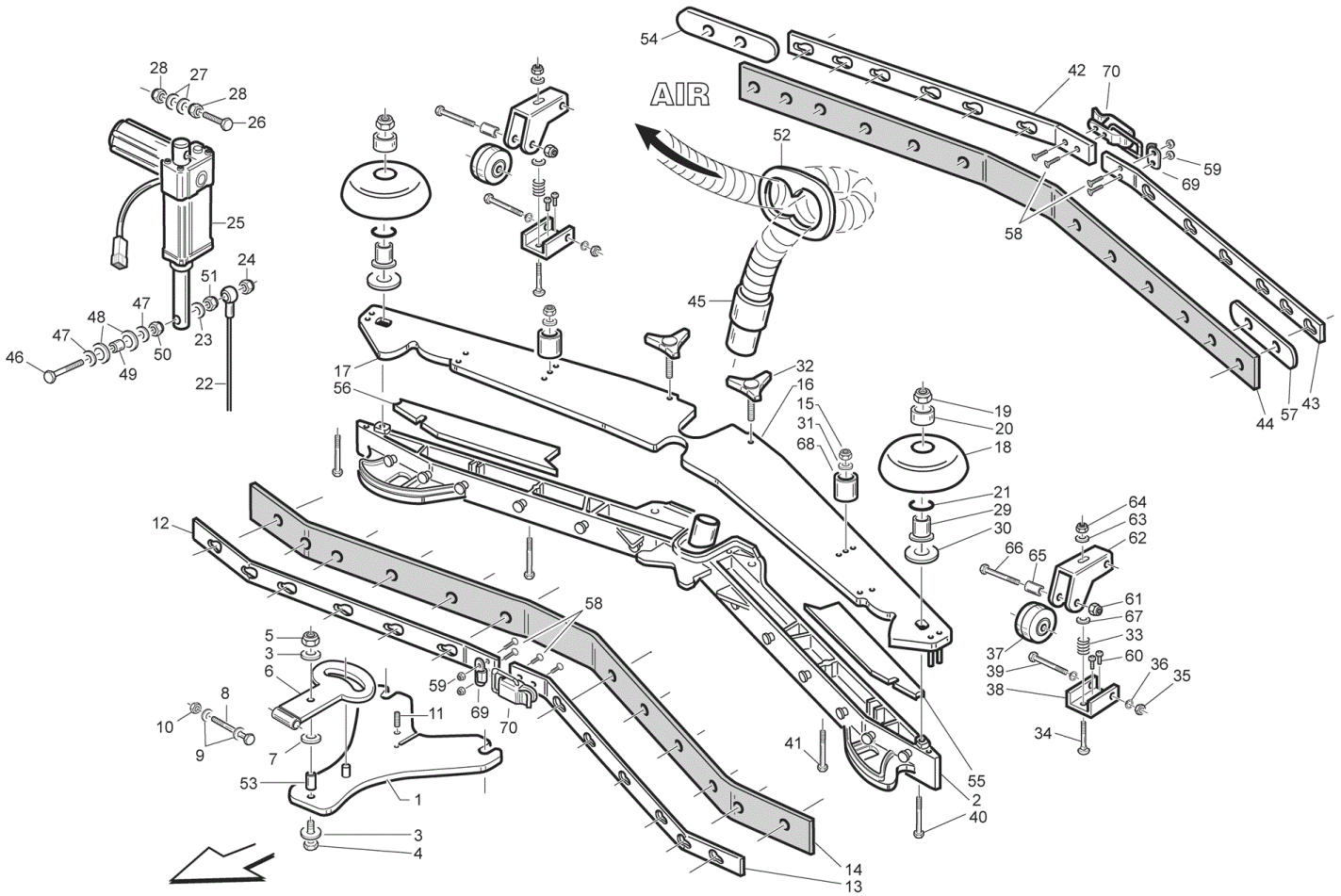
Ref.	K	Part N.	Customer Part N.	Description	Qty	Validity:		Price
						From	To	
0077		811883		SCREW TE M5X12 INOX	2,00	10/2011		--
0078				FUSE CARRIER MAXIVAL with cover	2,00	10/2011		--
0079		818205		FUSE 40A	2,00	10/2011		--



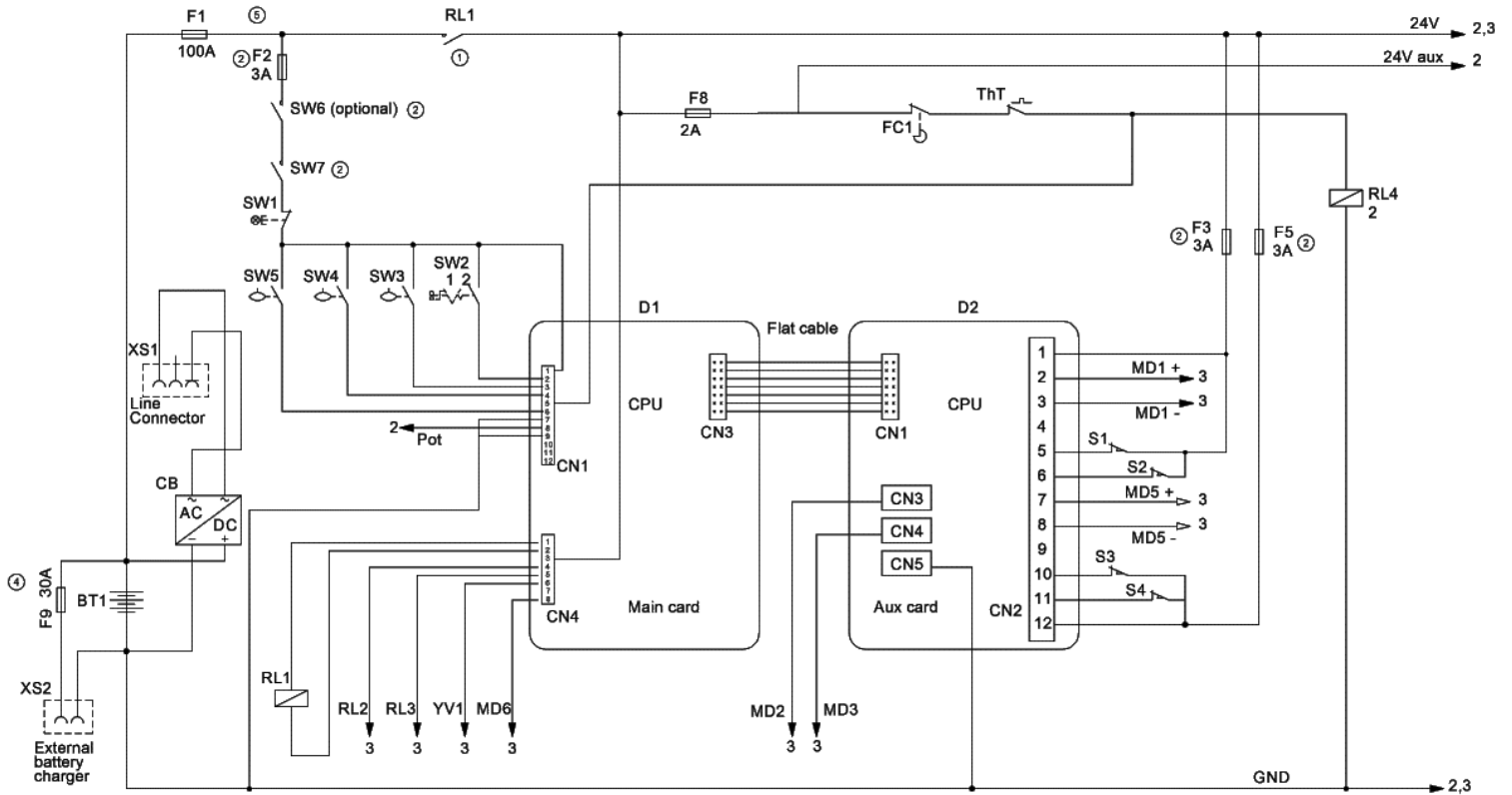
Ref.	K	Part N.	Customer Part N.	Description	Qty	Validity:		Price
						From	To	
0001		817105		FLASHING LIGHT G1050	1,00			--
0002				SCREW TCB-TC 3.5X25	3,00			--
0006		817349		BATTERY-CHARGER	1,00			--
0008		811883		SCREW TE M5X12 INOX	3,00			--
0010				SCREW TCB-TC 4,8X16 BRN	4,00			--
0011		816985		WASHER D. 5 INX	4,00			--
0012				CONTAINER -	1,00			--
0015				PLANE CT110	1,00			--



Ref.	K	Part N.	Customer Part N.	Description	Qty	Validity:		Price
						From	To	
0001				PLATE -	1,00			--
0002		818252		BODY SQUEEGEE PRESSOFUSO "L"	1,00			--
0003		814014		WASHER D. 8 X24 INX UNI 6593	1,00			--
0004				SCREW TE M8x35 UNI5739 INOX	1,00			--
0005		816731		NUT M 8 INX	1,00			--
0006		819030		SUPPORT -	1,00			--
0007		810983		WASHER D.12X24 UNI 6592 INX	1,00			--
0008				SCREW	1,00			--
0009		816795		WASHER D. 8 INX UNI 6592	2,00			--
0010		816731		NUT M 8 INX	1,00			--
0011				CARRYNG BAG	1,00			--
0012				BRACKET -	1,00		10/2013	--
0012		814071		SHEET METAL PA.-	1,00	10/2013		--
0013				BRACKET -	1,00		10/2013	--
0013		814072		SHEET METAL PA.-	1,00	10/2013		--
0014		817476		RUBBER FRONT SQUEEGEE L PU	1,00		07/2013	--
0014		818530		BLADE L LATEX	1,00	07/2013		--
0015		811884		NUT M6 INOX	4,00			--
0016				PLATE -	1,00			--
0017				PLATE -	1,00			--
0018		814035		ROLLER PARACOLPI	2,00			--
0019		811884		NUT M6 INOX	2,00			--
0020		814034		BUSHING SHK	2,00			--
0021		819133		GASKET	2,00			--
0022				CABLE LIFTING SQUEEGEE CT110	1,00			--
0023		814033		WASHER D. 6 INX GRW UNI 1751	2,00			--
0024		811884		NUT M6 INOX	2,00			--
0025		817013		ATUATOR SQUEEGEE CT110	1,00			--
0026				SCREW TE M 8X50 INOX A2 UNI	1,00			--
0027		816795		WASHER D. 8 INX UNI 6592	2,00			--
0028		816731		NUT M 8 INX	2,00			--
0029		816806		SPACER PER RUOTINO PARACOLPI	2,00			--
0030				WASHER 6x24 INOX UNI 6593	2,00			--
0031		806754		WASHER D.6 UNI 6592 INOX	2,00			--
0032		817323		KNOB AISI 304	2,00			--
0033		814026		SPRING D.15X 45 X1	2,00			--
0034		819147		SCREW M 8X 40 TTQST UNI 5731	2,00			--
0035		811884		NUT M6 INOX	2,00			--
0036				CIRCLIP D. 6 UNI 7434 INOX	4,00			--



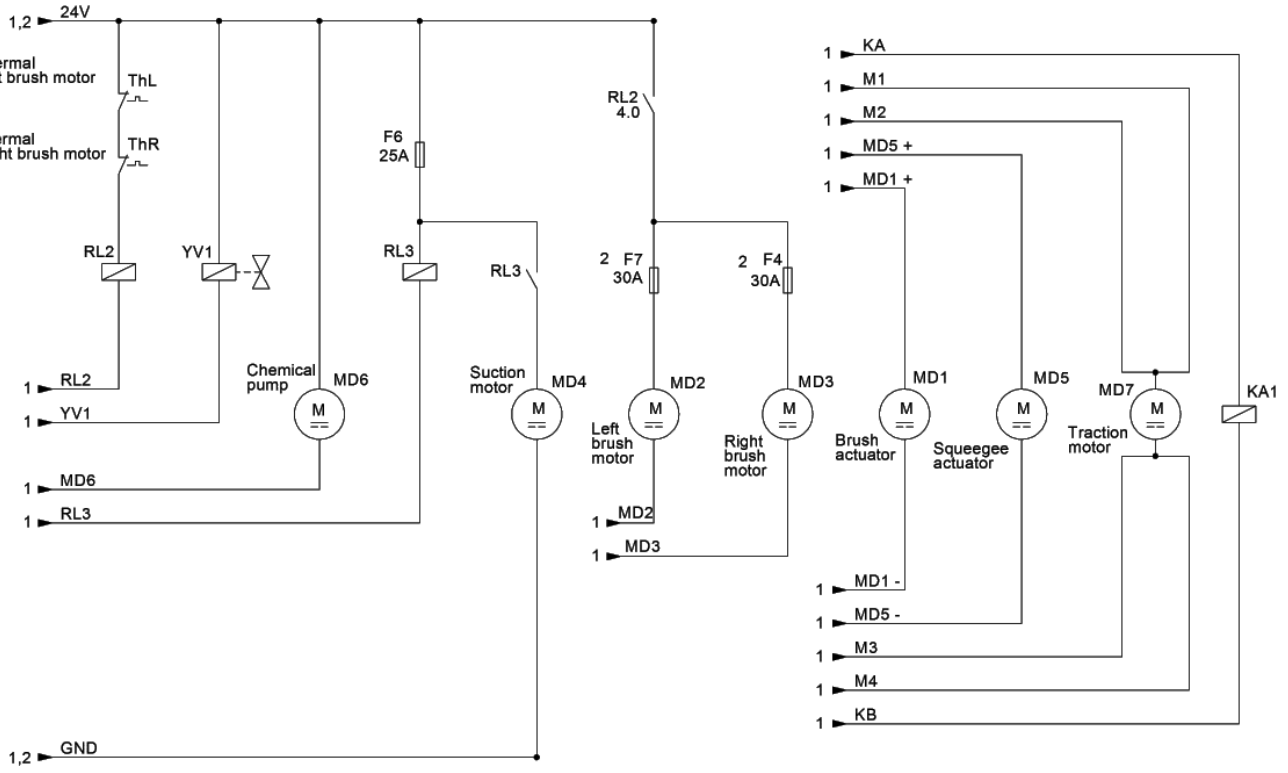
Ref.	K	Part N.	Customer Part N.	Description	Qty	Validity:		Price
						From	To	
0037		818547		WHEEL D.8x32	2,00			--
0038		816766		BRACKET SUPP.RUOTINO SQUEEGEE	2,00			--
0039		816935		SCREW TE M 6X 50 INOX A2	2,00			--
0040				SCREW TE M 6X65 UNI 5739 INX	2,00			--
0041		819130		SCREW TE M. 6-70	2,00			--
0042				BRACKET -	1,00		10/2013	--
0042		819190		SHEET METAL PA.-	1,00	10/2013		--
0043				BRACKET -	1,00		10/2013	--
0043		819191		SHEET METAL PA.-	1,00	10/2013		--
0044		817477		RUBBER REAR SQUEEGEE L PU	1,00		07/2013	--
0044		818531		BLADE L LATEX	1,00	07/2013		--
0045		817001		TUBE TERGI D.40	1,00			--
0046				SCREW TE M 6X 60 UNI 5739 INX	1,00			--
0047				WASHER D. 6 INX	3,00			--
0048		816795		WASHER D. 8 INX UNI 6592	2,00			--
0049				BUSHING	1,00			--
0050		816441		NUT M 6 INX	1,00			--
0051		816441		NUT M 6 INX	1,00			--
0052				FLANGE	1,00			--
0053				SPACER S. BLOCK BT 530	1,00			--
0054				CLOSURE L	1,00			--
0055				GASKET -	1,00			--
0056				GASKET -	1,00			--
0057				CLOSURE L	1,00			--
0058		819141		SCREW TSTC M3X8	8,00			--
0059		819142		NUT M 3 INOX	8,00			--
0060				RIVET -	4,00			--
0061		811884		NUT M6 INOX	2,00			--
0062				SUPPORT RUOTINO	2,00			--
0063		816795		WASHER D. 8 INX UNI 6592	2,00			--
0064		816731		NUT M 8 INX	2,00			--
0065				TUBE D 8/6	0,01			--
0066		816935		SCREW TE M 6X 50 INOX A2	2,00			--
0067		8167953		WASHER D. 8 INX UNI 6592	2,00			--
0068				BRACKET -	2,00			--



MAIN CONTROL BOARD

PLDC01844_6

Ref.	K	Part N.	Customer Part N.	Description	Qty	Validity:		Price
						From	To	
00CB		817349		BATTERY-CHARGER	1,00			--
00D1		818181		BOARD CONTROL PANEL CT110	1,00			--
00F1				FUSE 100A	1,00			--
00F2				FUSE A LAMA 2 A. UNIVAL	1,00			--
00F3		819156		FUSE 5A	1,00			--
00F4		815156		FUSE RESETTABLE 25A -ETA-	1,00			--
00F5		819156		FUSE 5A	1,00			--
00F6		815156		FUSE RESETTABLE 25A -ETA-	1,00			--
00S1		817014		ATUATOR	1,00			--
00S2		817014		ATUATOR	1,00			--
00S3		817014		ATUATOR	1,00			--
00S4		817014		ATUATOR	1,00			--
0FC1		818318		DASHBOARD SEDILE	1,00			--
0FU7		815156		FUSE RESETTABLE 25A -ETA-	1,00			--
0HL2		817105		FLASHING LIGHT G1050	1,00			--
0MD1		817014		ATUATOR	1,00			--
0MD4		811067		MOTOR 3 ST.24V 116598-13	1,00			--
0MD5		817014		ATUATOR	1,00			--
0MD7		817314		MOTOR MR240-01 M420	1,00			--
0RL1		817292		CONTACTOR 24V-100A	1,00			--
0RL2		817158		CONTACTOR 24V T106 P	1,00			--
0RL3		817158		CONTACTOR 24V T106 P	1,00			--
0RP2		817256		POTENTIOMETER 100K	1,00			--
0SQ1		817344		SENSOR -	1,00			--
0SW1		817215		BUTTON DI EMERGENZA	1,00			--
0SW2		817357		SWITCH A CHIAVE X MOT.BATT.P185	1,00			--
0SW3		810992		SENSOR DI LIVELLO ORIZZONTALE	1,00			--
0SW4		817010		SENSOR VS303-51N	1,00			--
0YV1		810262		SOLENOID VALVE	1,00		10/2011	--
0YV1		810274		SOLENOID VALVE	1,00	10/2011		--

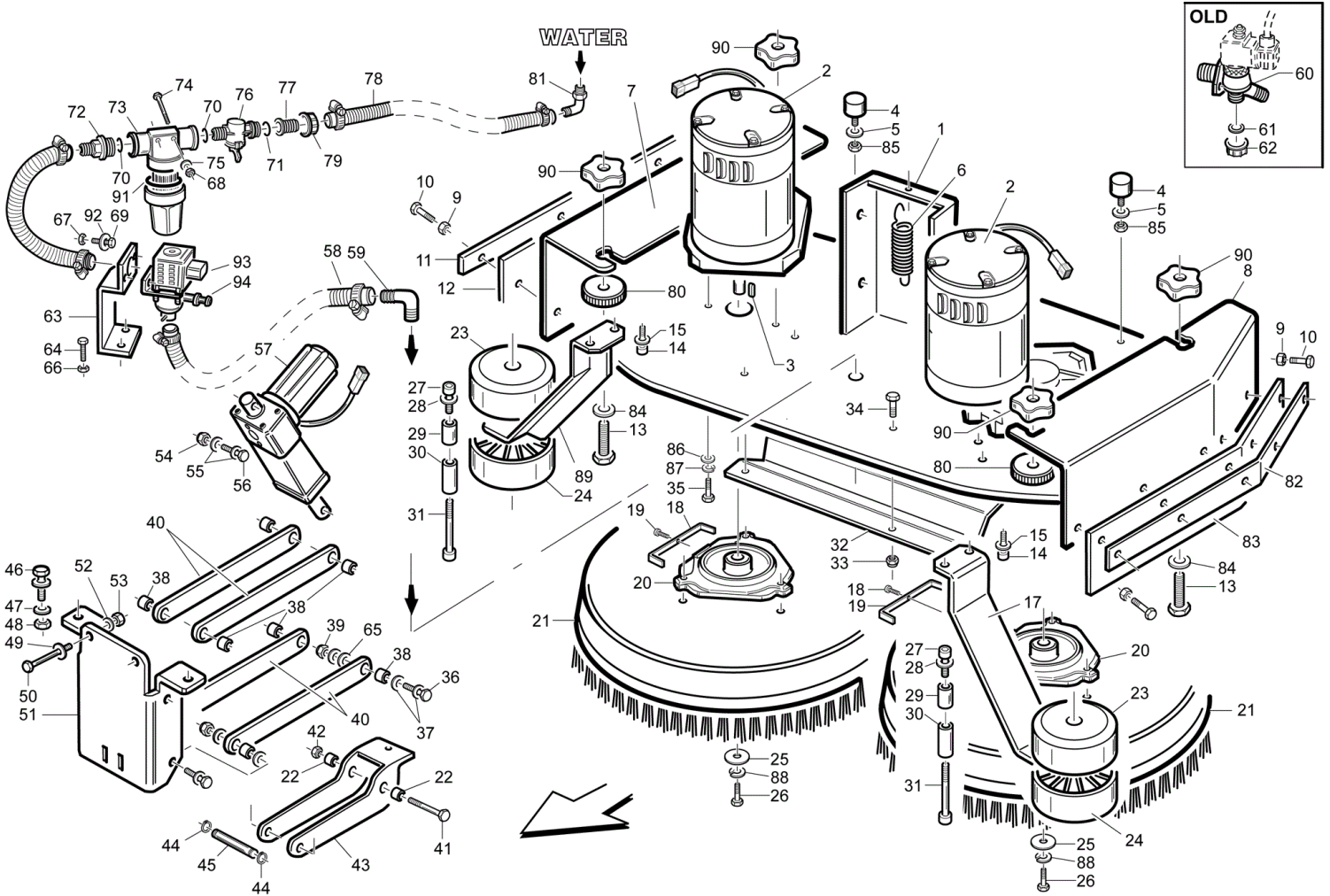


MOTORS AND ACTUATORS

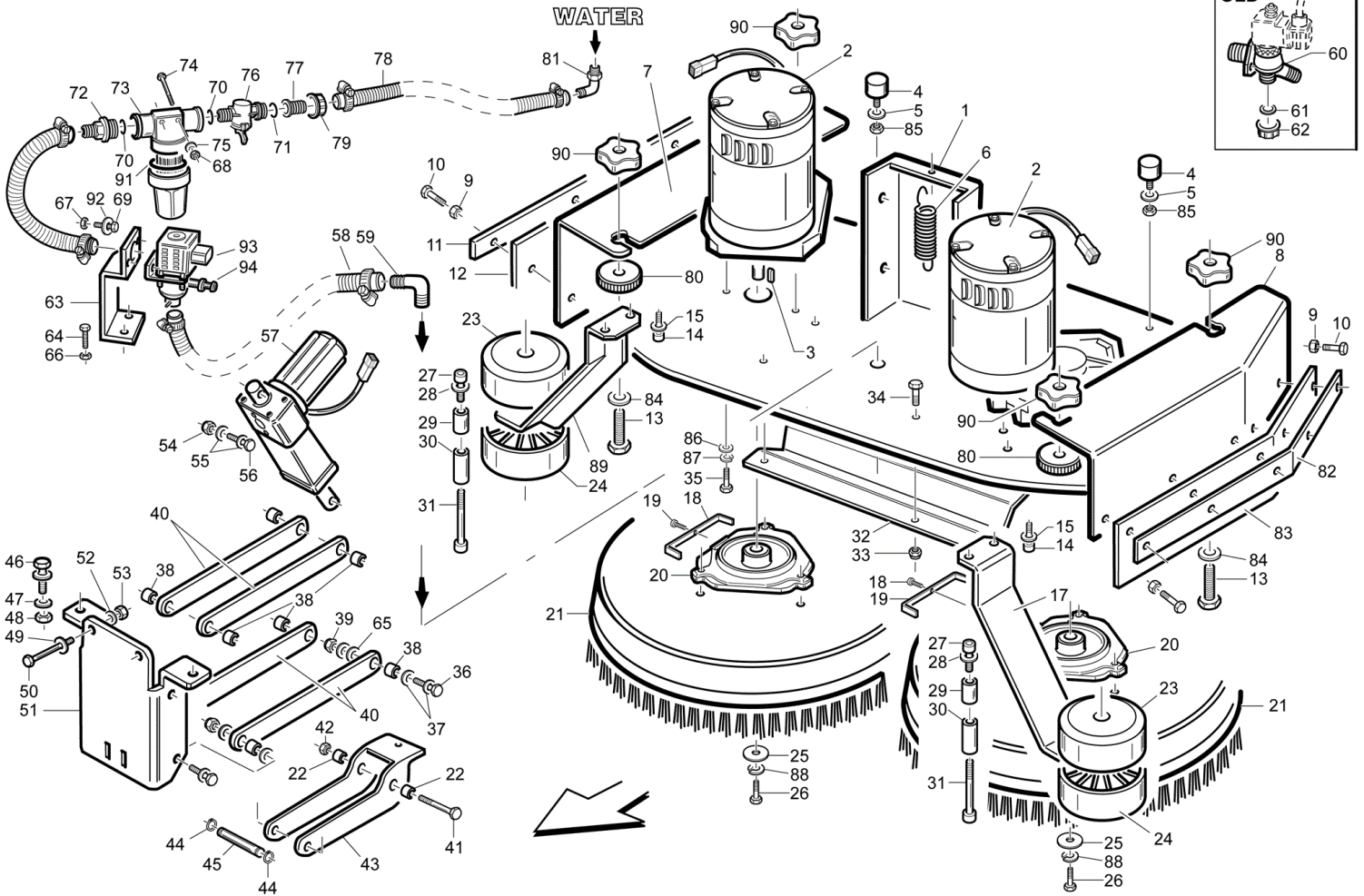
PLDC01844_6

Sim. Sym.	Sigla Item	Descrizione Description	Sim. Sym.	Sigla Item	Descrizione Description	Sim. Sym.	Sigla Item	Descrizione Description	Sim. Sym.	Sigla Item	Descrizione Description
	BT1 1	Battery 24V		F7 3	Fuse left brush		R1 2	Resistor		SW1 1	E_Stop button
	CB 1	OnBoard Battery charger (optional)		HL1 2	LED Curtis		RL1 1	Main contactor		SW2 1	ON / OFF key
	D1 1	Main control board		HL2 2	Rotating Beacon (optional)		RL2 3	Brush motor relay		SW3 1	Fluid level dirty water
	D2 1	Auxiliary control card		KA1 3	Brake		RL3 3	Suction motor relay		SW4 1	Fluid level Clean water
	F1 1	Fuse 24V main line		MD1 3	Brush actuator		RP1 2	Traction potentiometer (Throttle)		SW5 1	Fluid level chemical
	F2 1	Fuse 24V service line		MD2 3	Left brush motor		RP2 2	Speed reduction potentiometer		SW6 1	OnBoard charger safety switch (optional) (2)
	F3 1	Fuse linear actuator		MD3 3	Right brush motor		S1 1	Microswitch brush actuator UP		SW7 1	Charger plug safety switch (2)
	F4 3	Fuse right brush		MD4 3	Suction motor		S2 1	Microswitch brush actuator DW		XS1 1	Line Connector
	F5 1	Fuse linear actuator		MD5 3	Squeegee actuator		S3 1	Microswitch squeegee actuator UP		XS2 1	External battery charger
	F6 3	Fuse suction motor		MD6 3	Chemical pump		S4 1	Microswitch squeegee actuator down		YV1 3	Water electrovalve
	FC1 2	Seat microswitch		MD7 3	Traction motor		SQ1 2	Slow down inductive sensor		RL4 1	Inihit relay
	ThR 3	Thermal Right brush motor		F8 1	Fuse 24V aux line		ThT 1	Thermal traction motor			
	ThL 3	Thermal Left brush motor		F9 1	Fuse battery charge line						

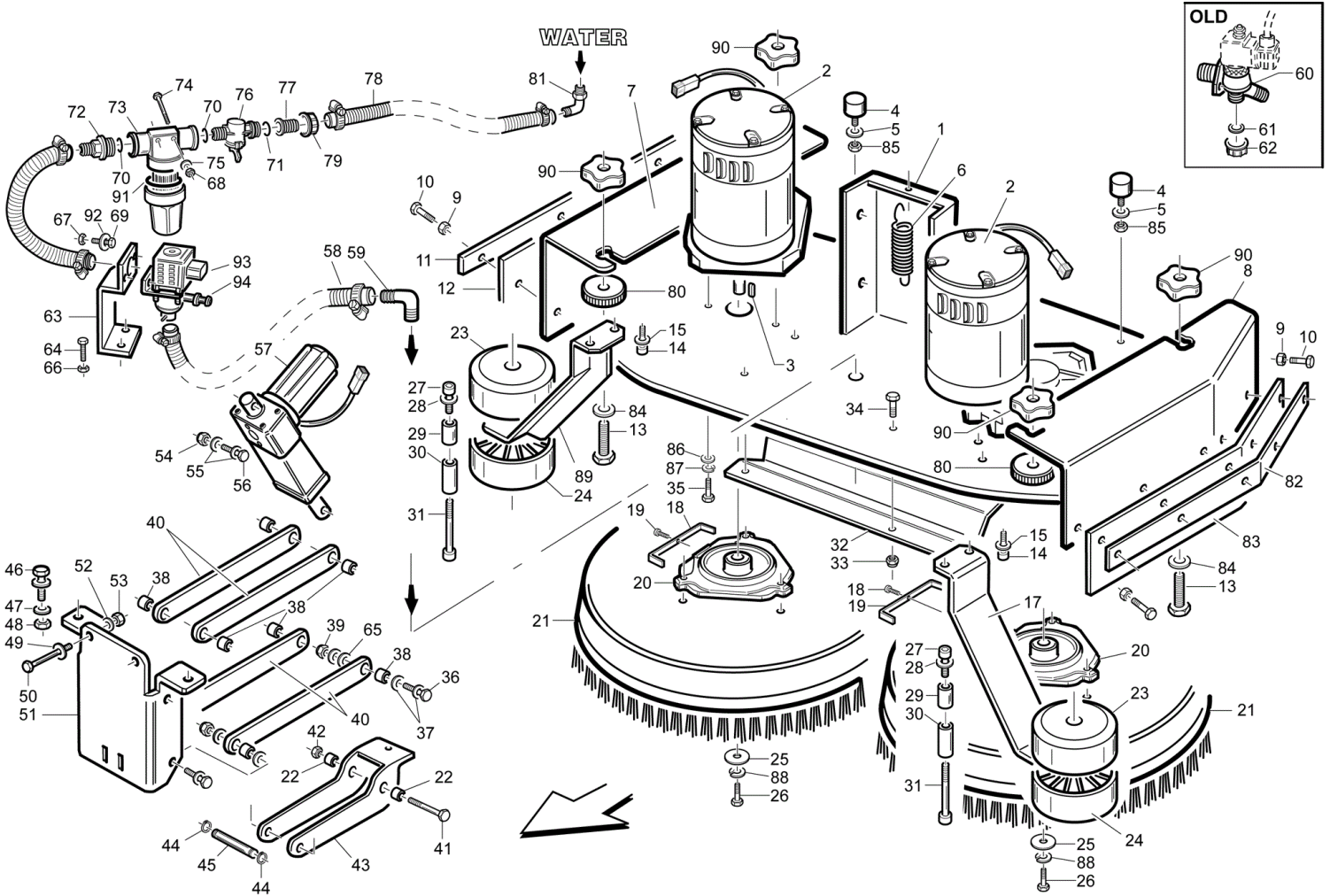
PLDC01844_6



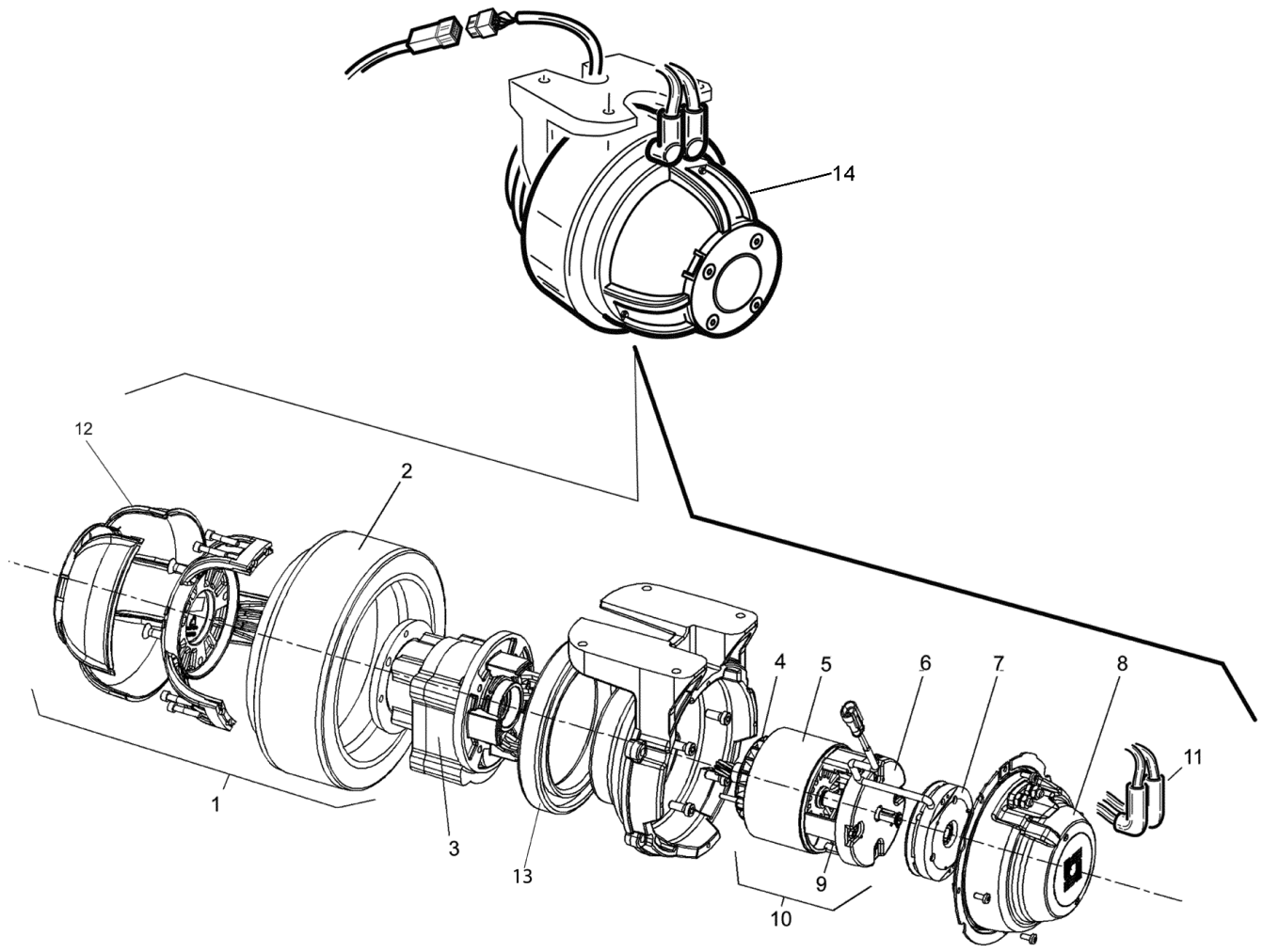
Ref.	K	Part N.	Customer Part N.	Description	Qty	Validity:		Price
						From	To	
0001				PLATE 700	1,00			--
0002		811085		MOTOR.GEARBOX 300W	2,00		04/2008	--
0002		811085		MOTOR GEARBOX BRUSH 24V 380W	2,00	04/2008		--
0002				BRUSH -	1,00			--
0003		816251		KEY 6X 6X30 UNI 6604	2,00			--
0004				VIBRATION DAMP.40x30 M8x2845 SH	2,00			--
0005				WASHER D. 8 INX GRW UNI 1751	2,00			--
0006		817141		SPRING TESTATA SPAZZOLA P185	1,00			--
0007				PLANE DX 700	1,00		11/2008	--
0007				PLANE DX 700	1,00	11/2008		--
0008				PLANE SX 700	1,00		11/2008	--
0008				PLANE SX 700	1,00	11/2008		--
0009		811884		NUT M6 INOX	10,00			--
0010		816797		SCREW TE 6X16 UNI5739	10,00			--
0011				SHEET METAL PA.FLAP	1,00		11/2008	--
0011				SHEET METAL PA.FLAP	1,00	11/2008		--
0012		817004		FLAP DX	1,00			--
0013				SCREW TE M 12X 60 INX UNI 5739	4,00			--
0014		816650		SCREW TE 8X25 UNI5739 INX	4,00			--
0015		816795		WASHER D. 8 INX UNI 6592	2,00			--
0017				SUPPORT PARACOLPI 700	1,00			--
0018		817295		SPRING ANTISGANCIO 70 X FLANGIA	2,00		05/2012	--
0018		817295		SPRING -	2,00	05/2012		--
0019				SCREW TCB-TC 4X10 8112	2,00			--
0020		817352		DRIVE DISK	2,00			--
0021		818527		BRUSH PES medium STD	2,00			--
0022				SPACER PER RIDUTTORE	2,00			--
0023		817334		WHEEL ANTIRIBALTAMENTO	2,00		04/2008	--
0023		817334		WHEEL ANTIRIBALTAMENTO	2,00	04/2008		--
0024				ROLLER PARACOLPI	2,00		04/2008	--
0024				WHEEL PARACOLPI	2,00	04/2008		--
0025		814014		WASHER D. 8 X24 INX UNI 6593	2,00			--
0026				SCREW TE 8X20 UNI5739 INX	2,00			--
0027		818330		SCREW TCEI M 8X16 ZC. UNI 5931	2,00			--
0028		816795		WASHER D. 8 INX UNI 6592	2,00			--
0029		818331		PIN RUOTA	2,00			--
0030		818334		SPACER RUOTA PARACOLPI	2,00			--
0031				SCREW TE 8X60 UNI5739	2,00			--
0032				CONVEYOR ACQUA	1,00			--



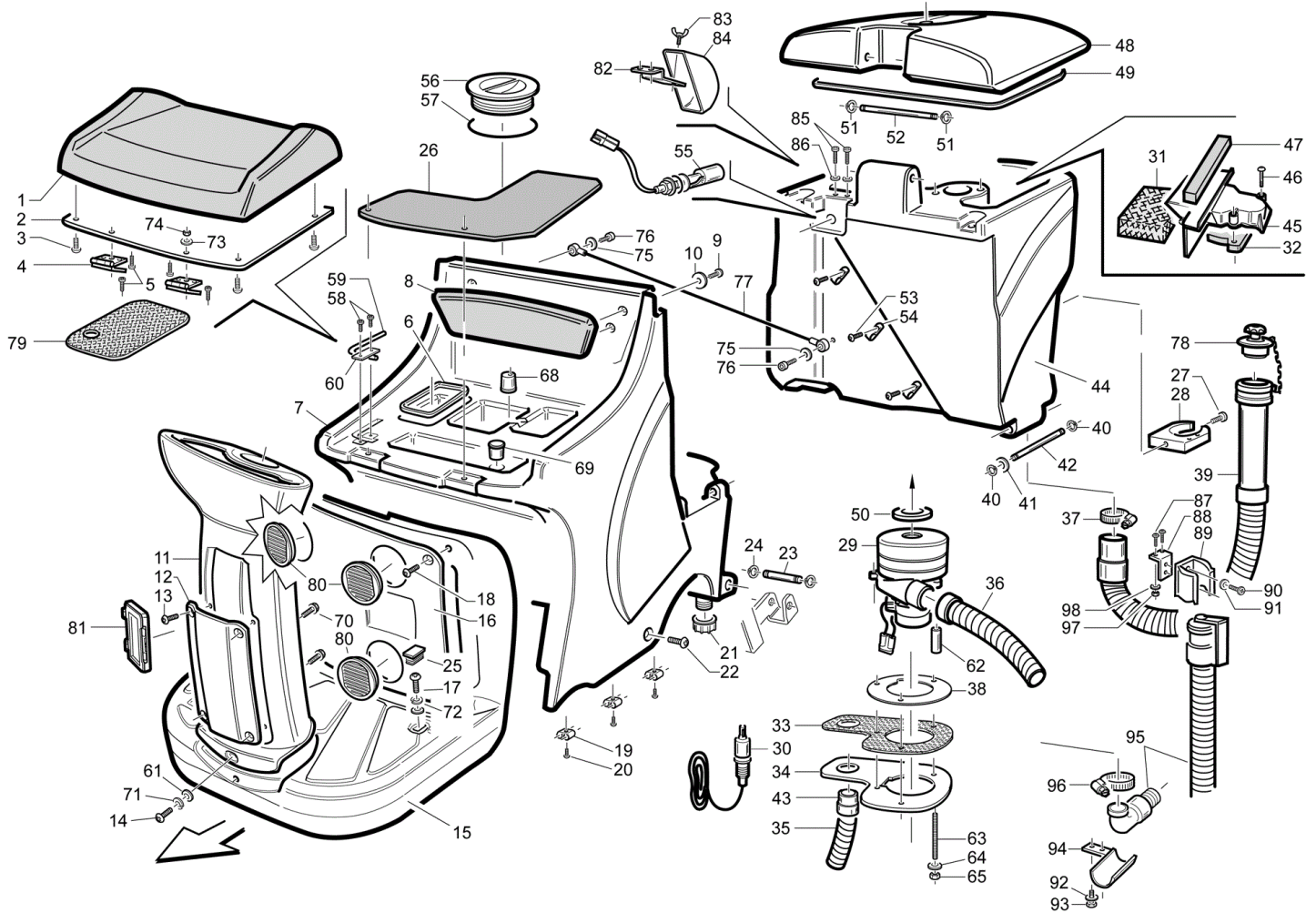
Ref.	K	Part N.	Customer Part N.	Description	Qty	Validity: From To	Price
0033		811884		NUT M6 INOX	4,00		--
0034		816797		SCREW TE 6X16 UNI5739	4,00		--
0035		816797		SCREW TE 6X16 UNI5739	8,00		--
0036				SCREW TE M 8X 30 INX UNI 5739	4,00		--
0037		816795		WASHER D. 8 INX UNI 6592	16,00		--
0038		817348		BUSHING X PARALLELOGRAMMA	8,00		--
0039				NUT M 8 INX A2 UNI 5588	4,00		--
0040				LEVER PARALLELOGRAMMA	4,00		--
0041				SCREW TE 6X45	2,00	03/2013	--
0041				SCREW TE M 6x45 INOX	2,00		03/2013
0042		816441		NUT M 6 INX	1,00		--
0043		817243		ARM ATTUATORE	1,00		03/2009
0043		817243		ARM -	1,00	03/2009	--
0044		818433		CIRCLIP D. 10 UNI 7435	2,00		--
0045				PIN INFER.ATTUAT.TEST.	1,00		--
0046				SCREW TE M 8X 30 INX UNI 5739	2,00		--
0047		816795		WASHER D. 8 INX UNI 6592	8,00		--
0048				NUT M 8 INX	4,00		--
0049		816795		WASHER D. 8 INX UNI 6592	8,00		--
0050				SCREW TE M 8X 30 INX UNI 5739	2,00		--
0051				ARM TESTATA	1,00		--
0052		816795		WASHER D. 8 INX UNI 6592	2,00		--
0053		811884		NUT M6 INOX	2,00		--
0054				NUT M 8 INX A2 UNI 5588	1,00		--
0055		814014		WASHER D. 8 X24 INX UNI 6593	2,00		--
0056				SCREW TE M8x35 UNI5739 INOX	1,00		--
0057		817014		ATUATOR BRUSH HEAD CT110	1,00		--
0058		819128		TUBE FLEX D.12X3 ARMORV.PVC TR	0,18		--
0059		817212		HOSE FITTING "L" 3/8M - D.10 PLS.	1,00		--
0060		810262		SOLENOID VALVE	1,00		--
0061		818246		GASKET D.21 SP.3 GOMMA	1,00		--
0062		817064		CAP 1/2"G X ELETTROV. ACL	1,00		--
0063				BRACKET PORTAELETTROVALVOLA	1,00		--
0064		817466		SCREW TE 6X 12 A2 UNI 5739	1,00		--
0065		814014		WASHER D. 8 X24 INX UNI 6593	2,00		--
0066		816441		NUT M 6 INX	1,00		--
0067				NUT M 4 INX	2,00		--
0068		811884		NUT M6 INOX	2,00		--
0069				SCREW TE M4x12 UNI 5739 INOX	2,00		--



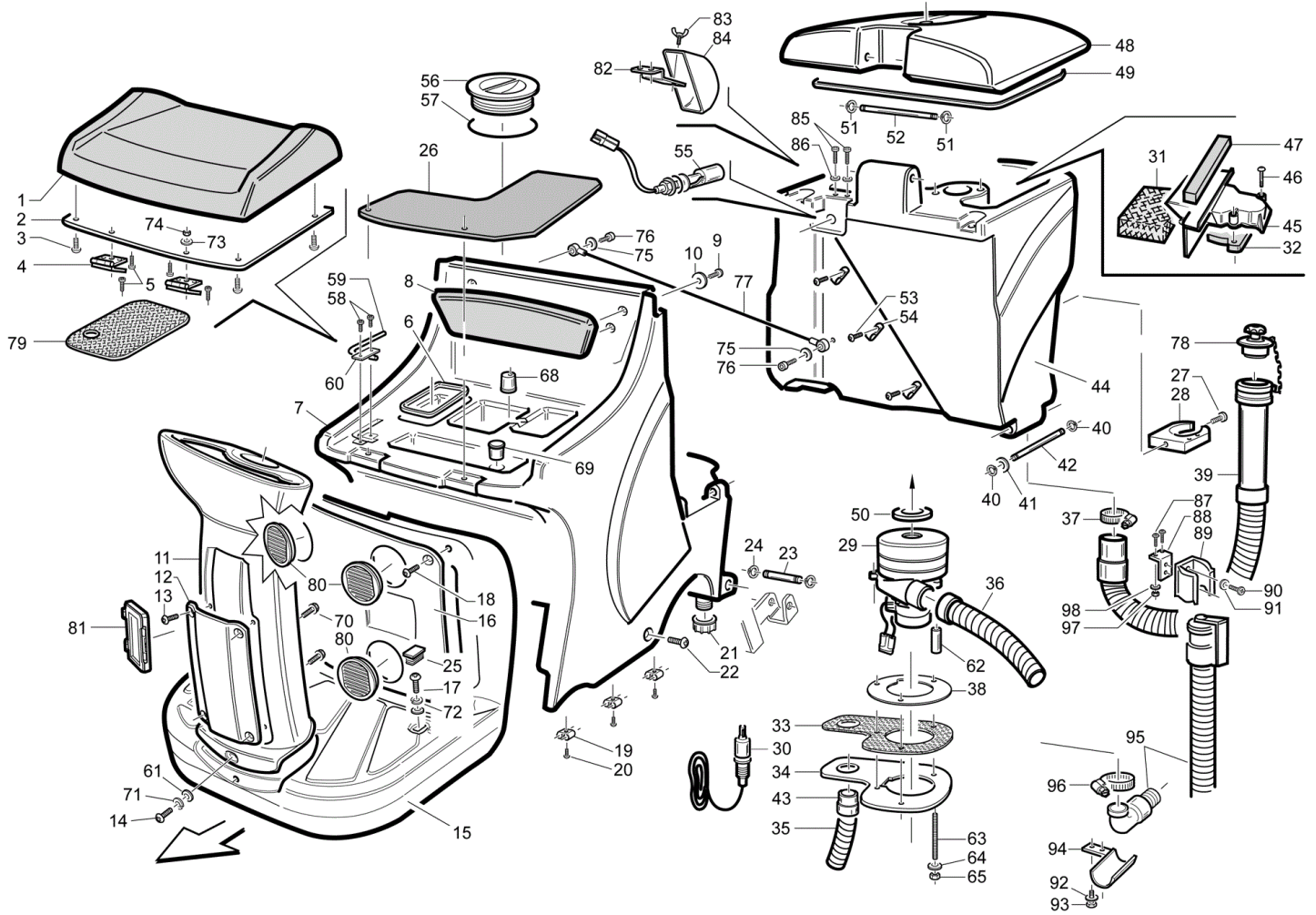
Ref.	K	Part N.	Customer Part N.	Description	Qty	Validity:		Price
						From	To	
0070		817085		O-RING D. 17.04 X 3.53 NBR 70SH	2,00			--
0071		817087		GASKET -	1,00			--
0072		817088		CONNECTOR	1,00			--
0073		817002		FILTER G1/2 INOX	1,00			--
0074		819130		SCREW TE M. 6-70	2,00			--
0075				WASHER D. 6X18 INX UNI 6593	2,00			--
0076		817086		TAP -	1,00			--
0077				CONNECTOR -	1,00			--
0078		819128		TUBE FLEX D.12X3 ARMORV.PVC TR	0,45			--
0079				RING NUT G1/2	1,00			--
0080		817083		ROD M12	4,00	04/2011		--
0080				WASHER ZIGRINATA	4,00		04/2011	--
0081		816892		CURVE 90°	1,00			--
0082				SHEET METAL PA.FLAP	1,00		11/2008	--
0082		818456		FLANGE -	1,00	11/2008		--
0083		817005		FLAP SX	1,00			--
0084		810983		WASHER D.12X24 UNI 6592 INX	2,00			--
0085				NUT M 8 INX A2 UNI 5588	2,00			--
0086				WASHER D. 6X18 INX UNI 6593	8,00			--
0087		814033		WASHER D. 6 INX GRW UNI 1751	8,00			--
0088				WASHER D. 8 INX GRW UNI 1751	2,00			--
0089				SUPPORT PARACOLPI 700	1,00			--
0090		817413		KNOB -	4,00	09/2008		--



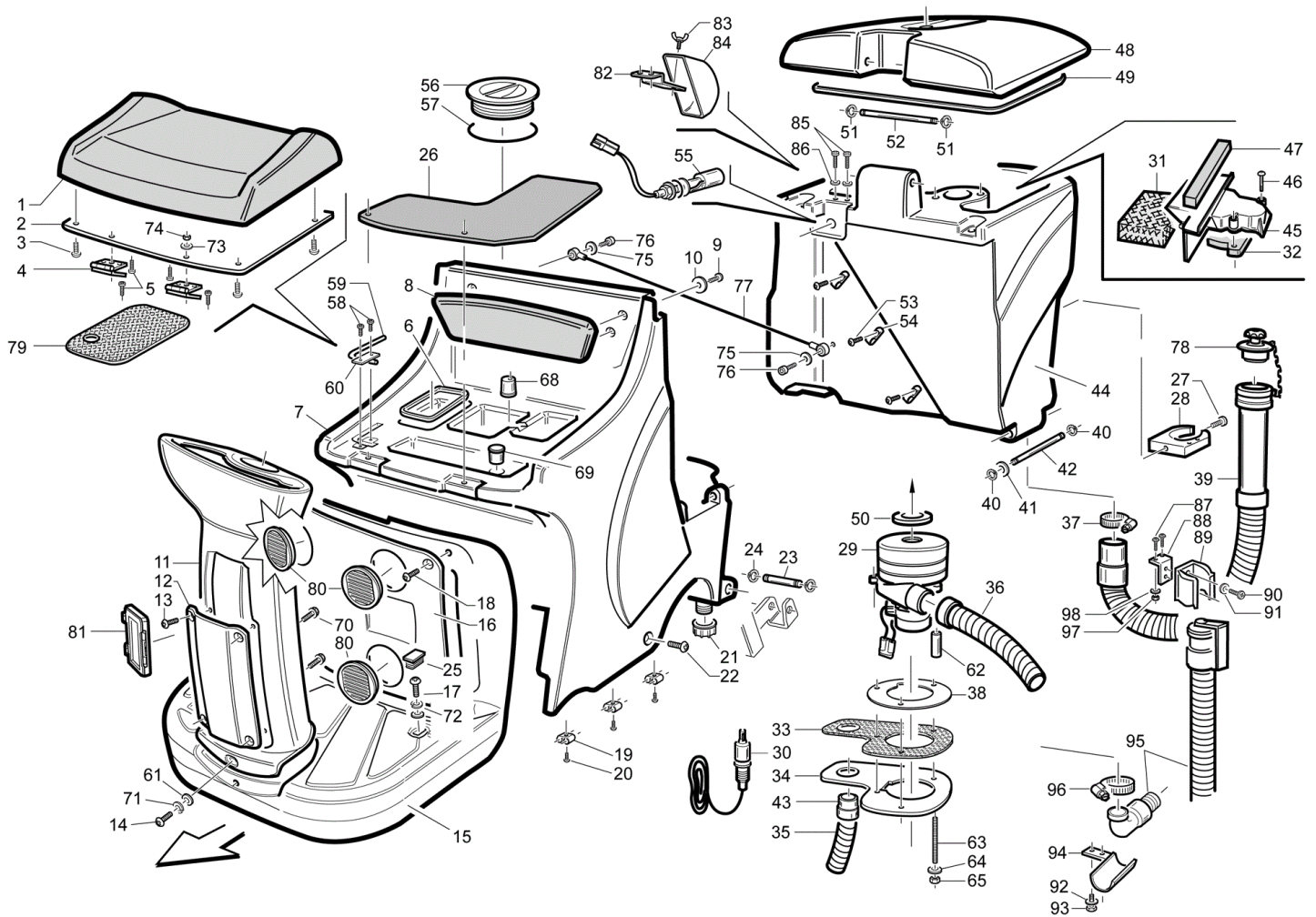
Ref.	K	Part N.	Customer Part N.	Description	Qty	Validity:		Price
						From	To	
0001		814251		RING MOTORWHEEL	1,00			--
0002		814250		RING MOTORWHEEL	1,00			--
0003				REDUCTION UNIT CT110	1,00			--
0006				CAP CT110	1,00			--
0007				BRAKE -	1,00			--
0008		818703		COWLING MOTORUOTA	1,00			--
0009				BRUSHES CT110	4,00			--
0010				MOTOR	1,00			--
0011				PIPETTE	2,00			--
0012		818556		COVER -	1,00			--
0013				BEARING 61926 2RS	1,00			--
0014		817314		KIT KOMPLET DRIVE	1,00			--



Ref.	K	Part N.	Customer Part N.	Description	Qty	Validity:		Price
						From	To	
0001		818319		SEAT	1,00			--
0002				PLATE CT110	1,00			--
0003		816797		SCREW TE 6X16 UNI5739	4,00			--
0004				HINGE PORTA SEDILE P185	2,00			--
0005				SCREW M 5X 12 TSPEI UNI 5933	4,00			--
0006				GASKET CT110	1,00			--
0007				TANK CT110	1,00			--
0008				SHEET METAL PA.CLEANTIME	1,00			--
0009				SCREW TE M 6X 30 UNI 5739 INX	2,00			--
0010				WASHER D. 6X18 INX UNI 6593	4,00			--
0011				SIDE PANEL CT110	1,00			--
0012				COVER SCHEDE POTENZA	1,00			--
0013		814063		SCREW TE FR 5X12 ZB	4,00			--
0014				SCREW TE M 6x45 INOX	1,00			--
0015				PLANE CT110	1,00			--
0016		817450		COVER PANNELLO ELETTRONICA	1,00		11/2011	--
0016		814383		COVER -	1,00	11/2011		--
0017				SCREW TE M 6X 30 UNI 5739 INX	2,00			--
0018		814063		SCREW TE FR 5X12 ZB	4,00			--
0019		818175		CLAMP 20/30	3,00			--
0020				SCREW M 4X 10 TCB-TC INX	3,00			--
0021		810275		CAP SCARICO SERBATOIO SOLUZ.	1,00		10/2011	--
0021		818589		CAP SOLUTION TANK CT110	1,00	11/2011		--
0022		814063		SCREW TE FR 5X12 ZB	1,00			--
0023				PIN ROTAZIONE	2,00			--
0024				CIRCLIP D. 18 UNI 7435	4,00			--
0025				CAP STR35X25	2,00			--
0026				ROD CT110	1,00			--
0027				SCREW M 4X 16 TCB-TC UNI 7687	1,00			--
0028		817043		CLIP D.60	1,00			--
0029		816999		CARBON MOTORE ASP.AMET.116599-13	1,00			--
0029		811067		MOTOR 3 ST.24V 116598-13	1,00			--
0030		817010		SENSOR VS303-51N	1,00			--
0031		816649		FILTER	1,00			--
0032		818436		GASKET SCATOLA ASPIRAZIONE	1,00			--
0033		817012		SOUND-PROOFING ASPIRATORE	1,00			--
0034		818652		FLANGE ASPIRATORE	1,00			--
0035		817001		TUBE D 34 L200MM	1,00			--
0036				TUBE D 34 L200MM	1,00			--



Ref.	K	Part N.	Customer Part N.	Description	Qty	Validity:		Price
						From	To	
0037				CLAMP 45-60	1,00			--
0038				FLANGE IN NYLON	1,00			--
0039		817195		TUBE ACQUA SPORCA	1,00		03/2013	--
0039		817195		TUBE PU	1,00	03/2013		--
0040				CIRCLIP D. 8 UNI 7435	2,00			--
0041		816795		WASHER D. 8 INX UNI 6592	1,00			--
0042				PIN ROTAZIONE	1,00			--
0043				BUSHING L.450	1,00			--
0044				TANK CT110	1,00			--
0045		818435		BOX ASPIRAZIONE	1,00		01/2009	--
0045		818435		BOX -	1,00	01/2009		--
0046				SCREW TCEI 5X35 INOX UNI5931	2,00			--
0047				GASKET CONDOTTO ASPIRAZIONE	1,00			--
0048				COVER CT110	1,00			--
0049		817347		GASKET CT110	1,00			--
0050		817347		GASKET VACUUM MOTOR CT	1,00			--
0051				SEEGER 8	2,00			--
0052				PIN ROTAZIONE	1,00			--
0053				SCREW M 4X 10 TCB-TC INX	3,00			--
0054				DUCT LOCK D.9,5	3,00			--
0055		810992		SENSOR DI LIVELLO ORIZZONTALE	1,00			--
0056		818457		CAP -	1,00		06/2009	--
0057				GASKET CT110	1,00		06/2009	--
0058				SCREW M 4X 10 TSPEI INX U.5933	2,00			--
0059				ROD CT110	1,00			--
0060				PLATE CT110	1,00			--
0061				WASHER D. 6X18 INX UNI 6593	1,00			--
0062				SPACER PH	3,00			--
0063				ROD FILETTO	3,00			--
0064				WASHER D. 6X18 INX UNI 6593	3,00			--
0065		816441		NUT M 6 INX	3,00			--
0068				CAP CT110	1,00			--
0069				CAP CT110	1,00		12/2011	--
0069				CRANKCASE FRONTALE 705 GRIGIO	1,00	12/2011		--
0070				SCREW TE F/ROND. M 6X 16 ZB	4,00			--
0071		814033		WASHER D. 6 INX GRW UNI 1751	1,00			--
0072		814033		WASHER D. 6 INX GRW UNI 1751	2,00			--
0073				WASHER D. 5 0.466 UNI 6592	2,00			--
0074				NUT M 5 INX	2,00			--



Ref.	K	Part N.	Customer Part N.	Description	Qty	Validity:		Price
						From	To	
0075		816795		WASHER D. 8 INX UNI 6592	4,00			--
0076				SCREW TE 8X20 UNI5739 INX	2,00			--
0077				CABLE CT 110	1,00			--
0078		817398		CAP CT110	1,00			--
0079				MOUSSE CT110	1,00	07/2008		--
0080		814064		BRACKET FAN COOLER	3,00			--
0081		817065		DOOR TO REMOVE AND RESET FUSE	1,00	06/2008		--
0082				BRACKET -	1,00	06/2009		--
0083				SCREW 4x10	1,00	06/2009		--
0084				PROTECTION -	1,00	06/2009		--
0085				SCREW M 5X 16 TCB TC UNI 7687	2,00	06/2009		--
0086		811886		WASHER D. 5 INX GRW UNI 1751	2,00	06/2009		--
0087				SCREW TE UNI 5739 3X30 ZB	2,00			--
0088				BRACKET -	1,00			--
0089		816459		CLIP LAV. SHK	1,00			--
0090				SCREW TE M 4X 10 ZC. UNI 5739	2,00			--
0091				WASHER D. 4 GRW	2,00			--
0092		814033		WASHER D. 6 INX GRW UNI 1751	2,00			--
0093		817466		SCREW TE 6X 12 A2 UNI 5739	2,00			--
0094		817467		BRACKET -	1,00			--
0095		818112		TUBE CRISTALLO 6X9	1,00			--
0096		817468		CLAMP 30-45	1,00			--
0097				NUT UNI 5588 M3 ZB	2,00			--
0098				WASHER GROWER 3 ZNT	2,00			--